



Strategic Implementation Plan (SIP) for a Community-based Unified Forecast System (UFS)

CAM Working Group

Presented by

Curtis Alexander, NOAA/ESRL/GSD

Presented at Coordination Meeting

for UFS SIP

August 2, 2018; College Park, MD



CAM WG *Membership*



- *Curtis Alexander ESRL/GSD ***
- *Lucas Harris GFDL ***
- *Jack Kain NCEP/EMC ***
- *Dave Stensrud Penn State ***

- Eric Rogers NCEP/EMC
- Geoff DiMego NCEP/EMC
- Lou Wicker NSSL
- Adam Clark NSSL
- SJ Lin GFDL
- Stan Benjamin ESRL/GSD

- Ming Xue OU/CAPS
- Xuguang Wang OU/SoM
- **Jaime Wolff NCAR/DTC (UFS CAM support)**
- Glen Romine NCAR/MMM
- Bill Putman NASA/GMAO
- Gary Lackmann NC State
- Vittorio Gensini NIU

***Co-Chair*



CAM WG



Project Milestone Accomplishments

- **SIP project accomplishments to date:**

- RAPv4/HRRRv3 operationally implemented at NCEP on 12 July 2018 (GSD, EMC, NCO)
- HREFv2.1 scheduled for late 2018 including new post-processed products (EMC, GSD)
- Development of the stand-alone regional (SAR) FV3 code (EMC, GSD, NSSL, GFDL)
- Creation of SAR-FV3 domains that mimic operational RAP (13-km)/HRRR (3-km) domains
- Execution of SAR-FV3 24-84 hr forecasts at CAM scale using GFS ICs/LBCs (EMC, GSD)
- Developing capability to initialize SAR-FV3 from additional external model sources (GSD)
- Developed preliminary user-friendly workflow for end-to-end execution of SAR-FV3 (GSD)
- Execution/eval of multi-physics FV3 CAM nests, HWT SFE 2018 (CAPS, NSSL, SPC)
- Contribution of GSI-ensemble/variational radar reflectivity data assimilation (OU)
- Execution/eval of single-core CAM ensembles in HWT SFE 2018 (GSD, NCAR, OU, CAPS)
- Engaged DTC on UFS CAM support including participation in CAM WG (CAM WG)
- Drafted holistic CAM verification metrics including prioritizations (CAM/V&V WGs)
- Started development of pre-implementation CAM test plan for RRFS (CAM WG)
- Revision of SIP CAM annex for FY19-21 (CAM WG)



CAM WG



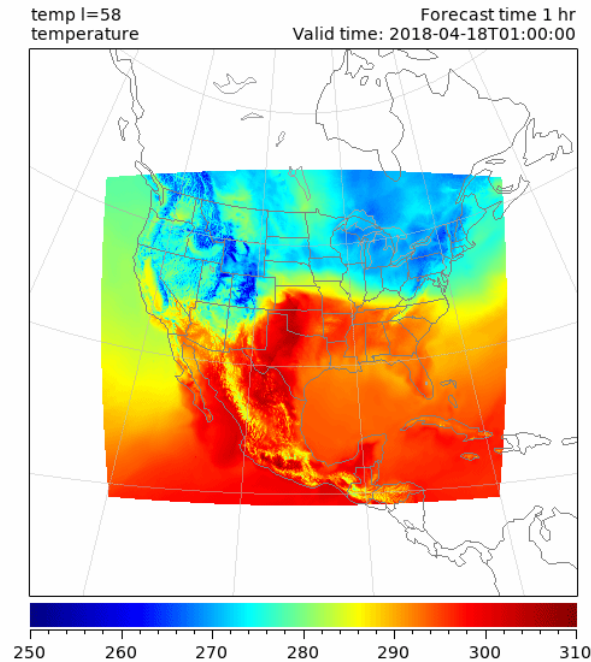
Project Milestone Accomplishments

Stand-Alone Regional FV3 CAM Development

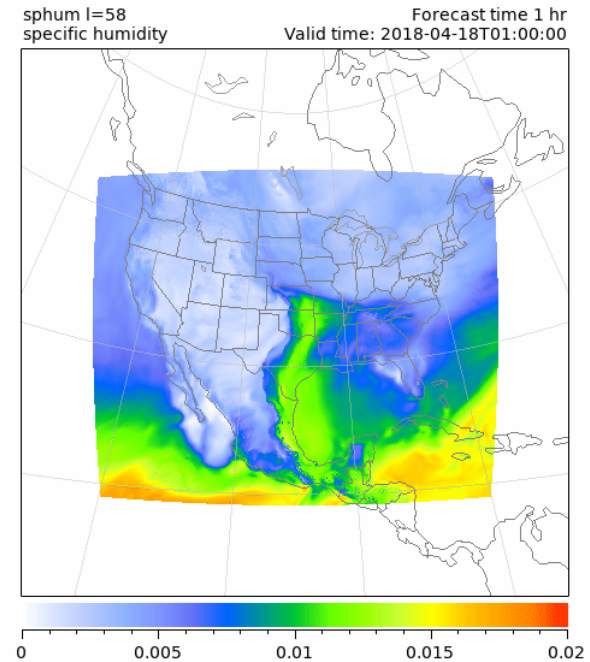
- Stand-alone regional FV3 test on NOAA Theia R&D HPC
- Nominal 3-km grid spacing
- 84-hr forecast
- 63 levels
- GFS initialization
- GFS physics
- Level 58 shown

Forecast/graphics
from Tom Black
NOAA/NCEP/EMC

Temperature



Specific Humidity





CAM WG

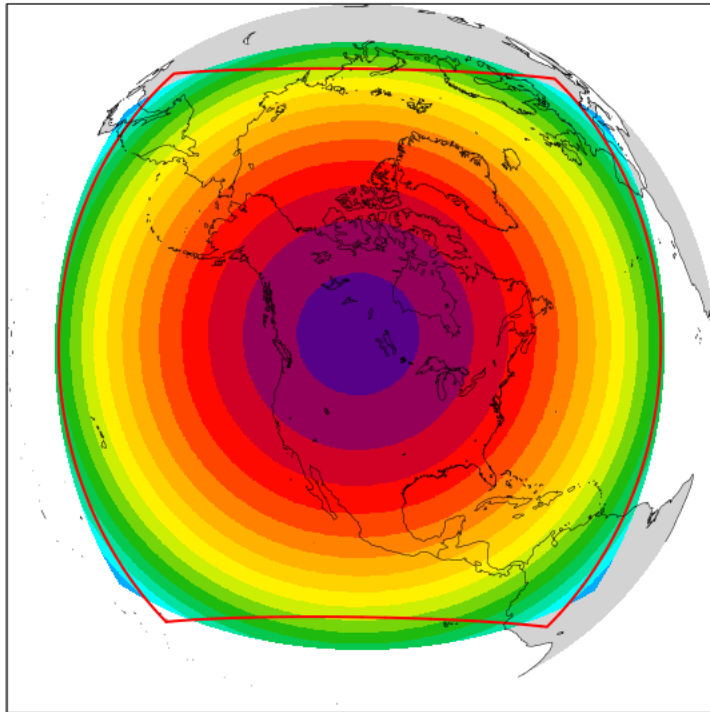


Project Milestone Accomplishments

Stand-Alone Regional FV3 CAM Development

RAP Domain

Grid Size (km) for CRES = C384



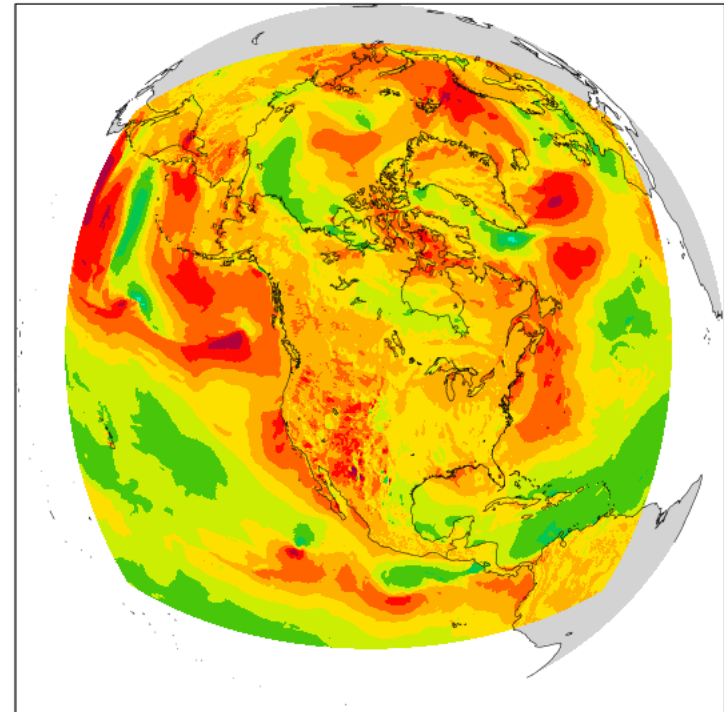
Forecast/
graphics from
Gerard
Ketefian
and
Jeff
Beck
GSD



8.4 9.2 10 10.8 11.6 12.4 13.2

12-hr forecast plot of 1000 mb U-wind

1000-mb u [m/s]



-20 -16 -12 -8 -4 0 4 8 12 16

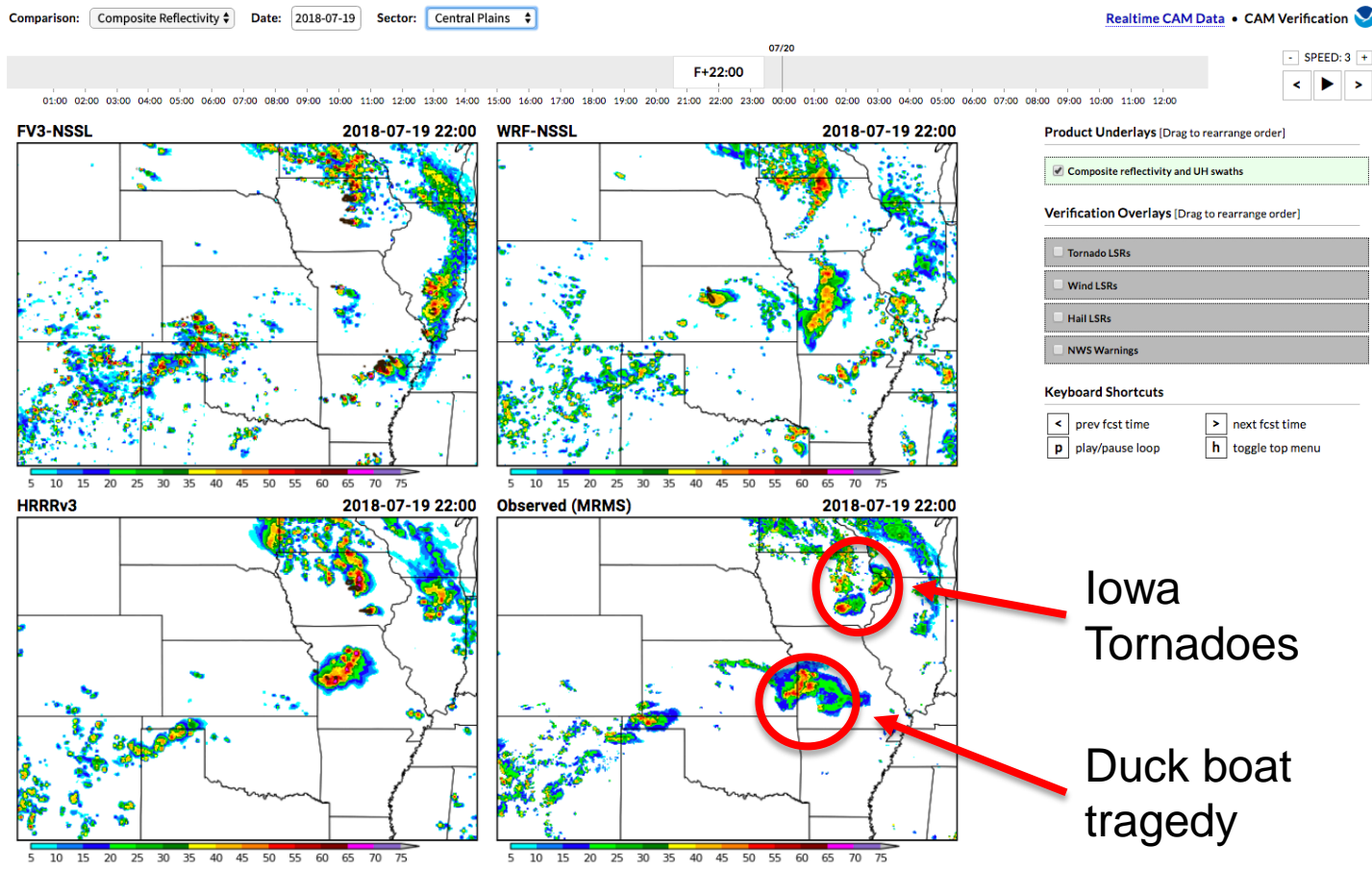


CAM WG

Project Milestone Accomplishments



Real-Time FV3 Comparisons



FV3 shown with comparisons to HRRRv3 and NSSL-WRF and observations.

Iowa tornadoes and Table Rock Lake day.

Iowa Tornadoes

Duck boat tragedy

(webpage designed by Brett Roberts)

Can be viewed at <https://hwt.nssl.noaa.gov/fv3/comparisons/>



CAM WG

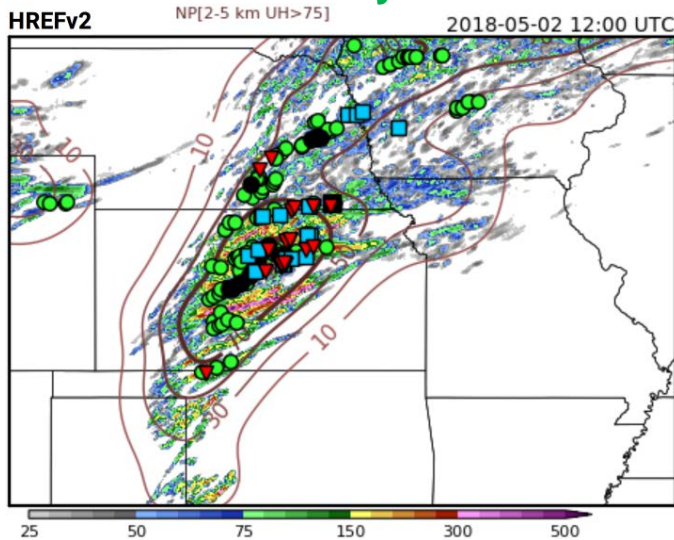


Project Milestone Accomplishments

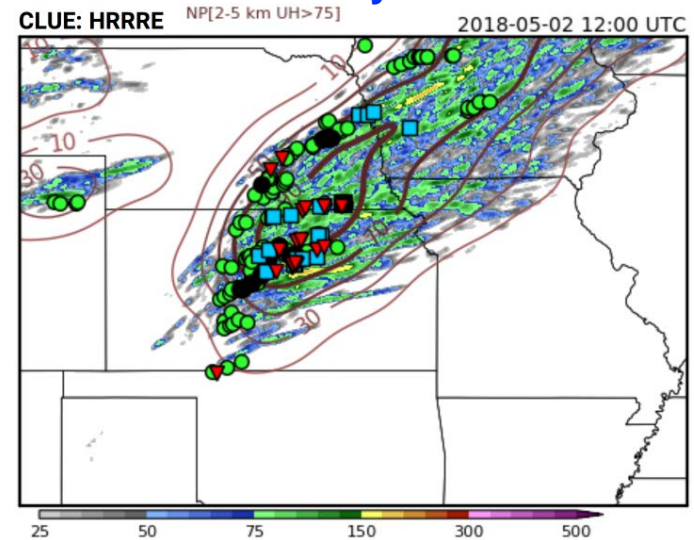
Real-time CAM Ensemble Demos HWT SFE 2018 "May Day" Forecast

Forecasts from HREF, HRRRE, NCAR Ensemble, CAPS EnKF, and OU (MAP) were evaluated during Hazardous Weather Testbed "Spring Experiment"

HREF: multi-model system



HRRRE: single-model system



HREF (left)
HRRRE (right)
Updraft Helicity
0-24 h forecast
8 members

tornado, hail,
and wind reports

graphics from Brett Roberts
Hazardous Weather Testbed

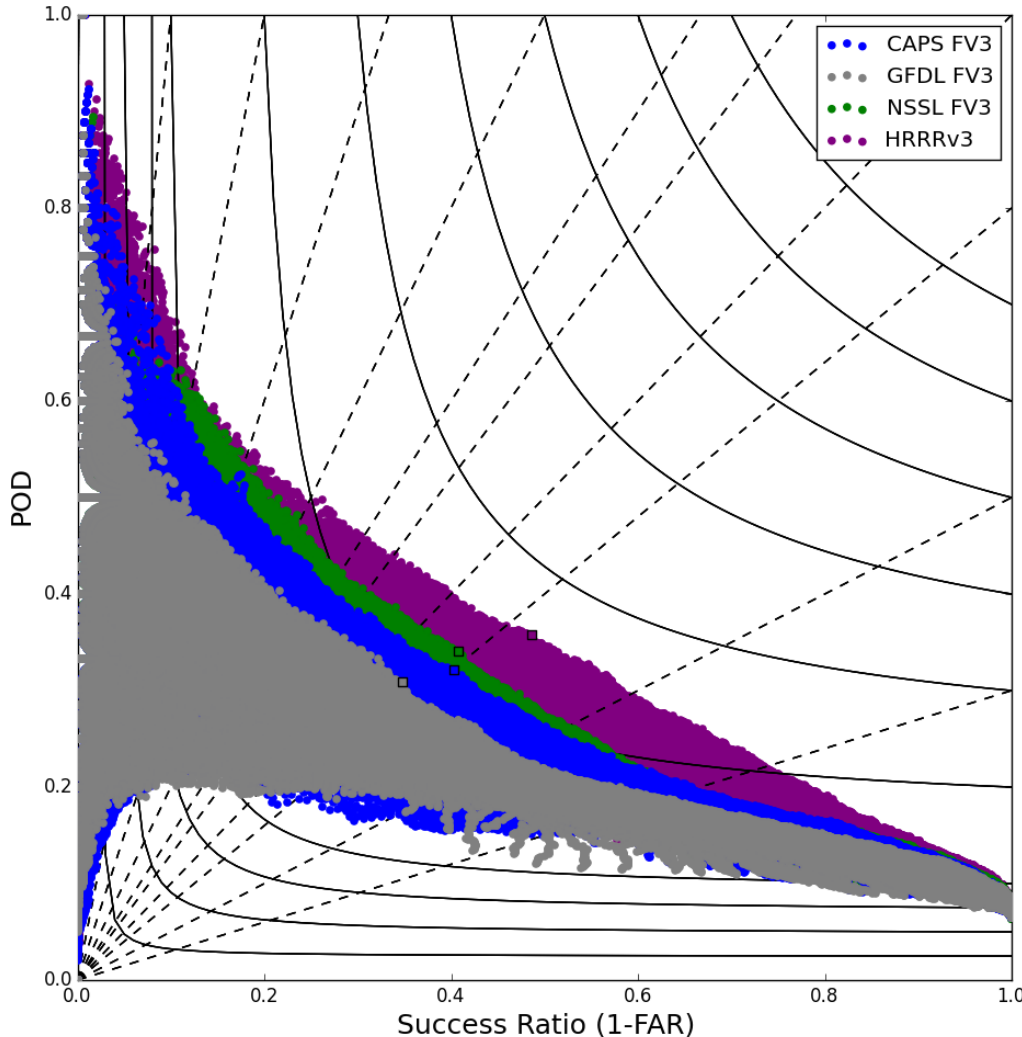


CAM WG

Project Milestone Accomplishments



NSSL FV3 Verification



Surrogate Severe performance diagram – every possible combination of forecast probability, UH percentile, and smoothing.

The closer to the top-right the better.

Performance Rank

1. HRRRv3
2. NSSL-FV3
3. CAPS-FV3
4. GFDL-FV3



CAM WG

Project Milestone Accomplishments



HWT SFE CLUE FV3 Members

Members	Contributor	Microphysics	LSM	PBL	Cumulus (global)	Grid-spacing (global)	Grid-spacing (nest)
fv3-phys01	CAPS	Thompson	NOAH	MYNN-SA	Tiedtke	13-km	3.5-km
fv3-phys02	CAPS	Thompson	NOAH	MYNN	Tiedtke	13-km	3.5-km
fv3-phys03	CAPS	Thompson	NOAH	YSU-SA	Tiedtke	13-km	3.5-km
fv3-phys04	CAPS	Thompson	NOAH	YSU	Tiedtke	13-km	3.5-km
fv3-phys05	CAPS	Thompson	NOAH	EDMF	Tiedtke	13-km	3.5-km
fv3-phys06	CAPS	NSSL	NOAH	MYNN-SA	Tiedtke	13-km	3.5-km
fv3-phys07	CAPS	NSSL	NOAH	MYNN	Tiedtke	13-km	3.5-km
fv3-phys08	CAPS	NSSL	NOAH	YSU-SA	Tiedtke	13-km	3.5-km
fv3-phys09	CAPS	NSSL	NOAH	YSU	Tiedtke	13-km	3.5-km
fv3-phys10	CAPS	NSSL	NOAH	EDMF	Tiedtke	13-km	3.5-km
fv3-phys11	CAPS	Thompson	NOAH	MYNN-SA	SA-SAS	13-km	3.5-km
fv3-phys12	CAPS	GFDL	NOAH	EDMF	SA-SAS	13-km	3.5-km
nssl-fv3	NSSL	Thompson	NOAH	MYNN-SA	Tiedtke	25-km	3.3-km
gfdl-fv3	GFDL	GFDL	NOAH	YSU	Tiedtke	13-km	3.0-km



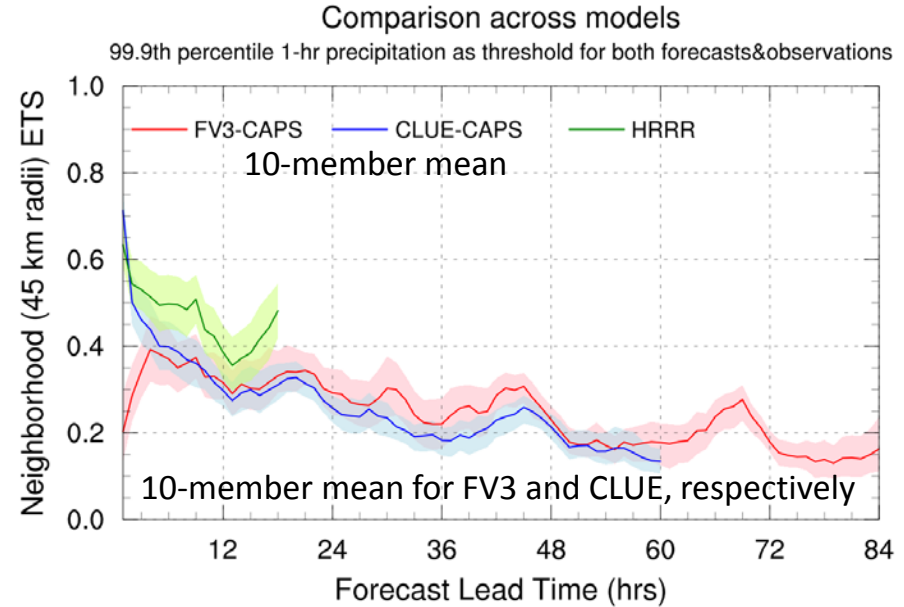
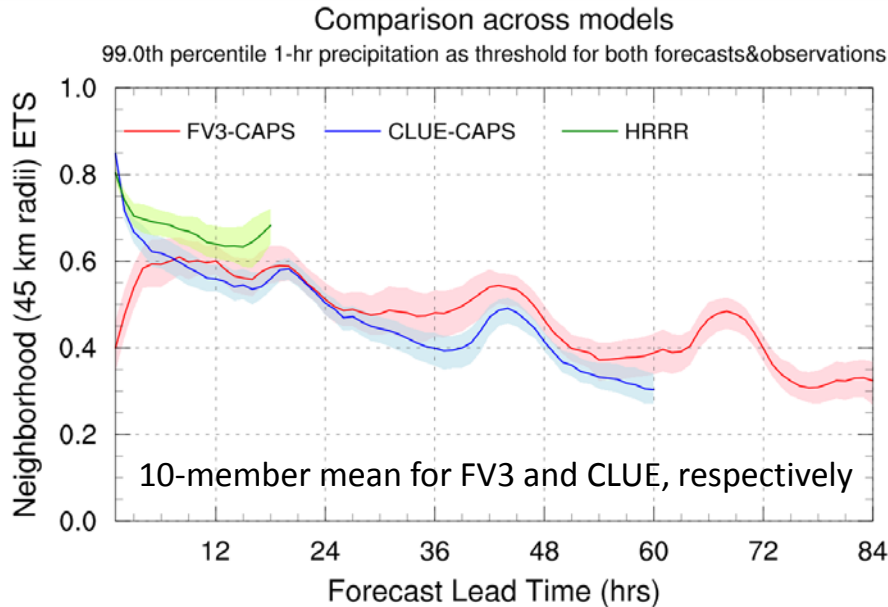
CAM WG

Project Milestone Accomplishments



HWT SFE CAM Precipitation Verification

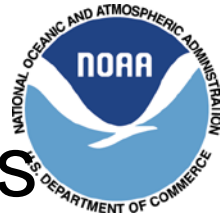
99.9th percentile



(Chunxi Zhang, Ming Xue, Tim Supinie, Fanyou Kong, Nathan Snook, Kevin Thomas, Keith Brewster, Lucas Harris, Shian-Jiann Lin)

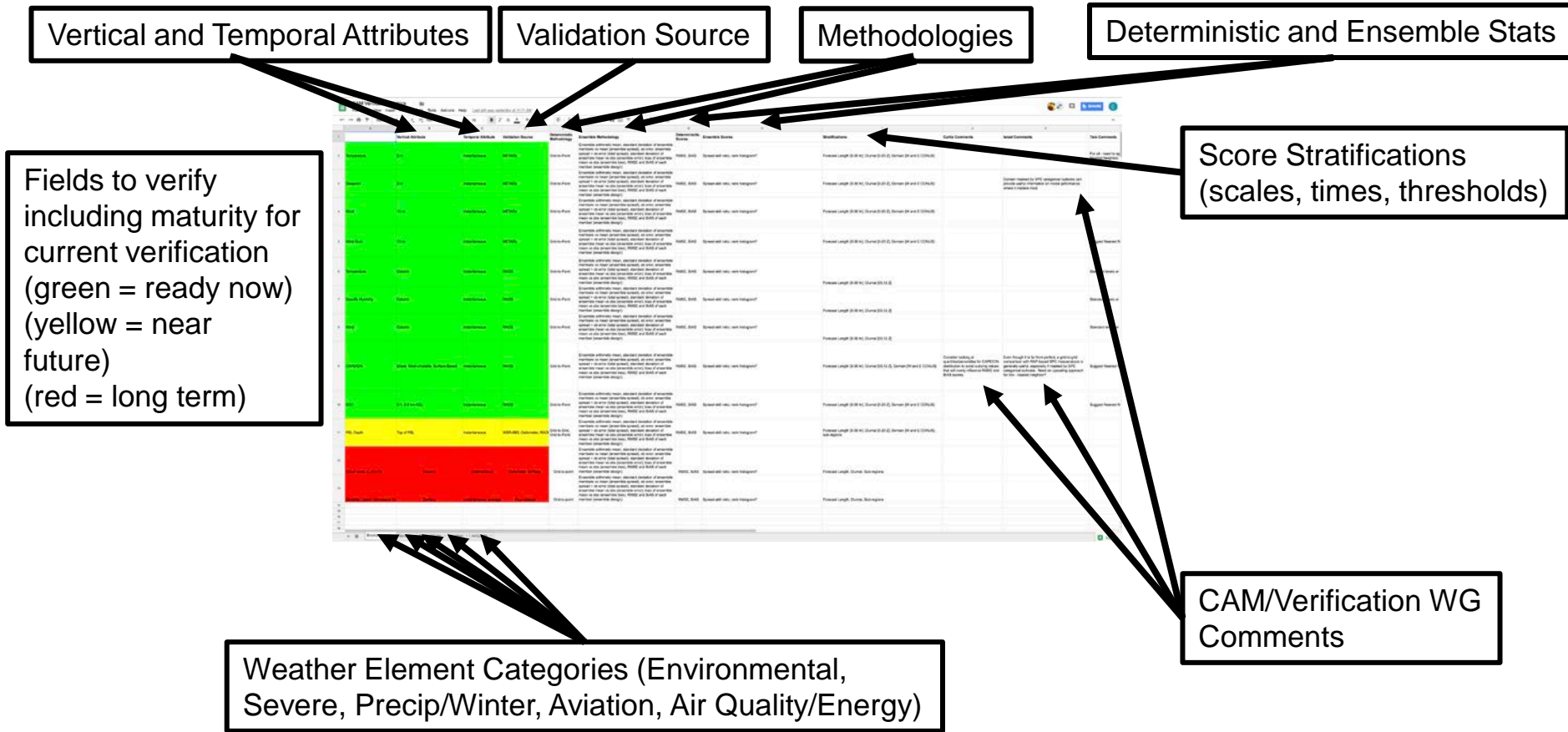


CAM WG



Team Coordination and Dependencies

CAM Verification Metrics Development Coordinated with V&V (and other) WGs





CAM WG



Team Coordination and Dependencies

SIP CAM annex changes for FY19-21

Consolidation to three primary projects:

- CAM deterministic transition to FV3
 - RAPv5/HRRRv4 transition to operations
 - SAR FV3 development
 - Transition RAP/HRRR/NAM/nest to SAR FV3
- CAM ensemble DA transition to FV3
 - Single-core CAM ensemble DA development
 - New observational data assimilated
 - Transition CAM ensemble DA to FV3
- CAM ensemble forecast transition to FV3
 - HREF development
 - Transition HRRRE/WoF to SAR FV3
 - RRFS formation and pre-implementation tests

FY19				FY20				FY21			
Q1	Q2	Q3	Q4	Q1	Q2	Q3	Q4	Q1	Q2	Q3	Q4
Continue development of RAPv5/HRRRv4, including Assimilation of radar, satellite, and other high-resolution obs using ensemble DA, improvements to model physics, other advancements								Evolve Deterministic RAP/HRRR-like capabilities for FV3-based modeling system			
Continue development of CAM-scale capabilities of FV3-based systems, including SAR, regional nesting in global, multiple and moving nest capabilities, and advanced physics; Evaluate in NOAA testbeds											
				Freeze deterministic WRF-ARW developments by Q1 FY20; Develop and transition NAM/NAM-nest and RAP/HRRR-like capabilities with FV3-based prediction system; continue testbed evaluations							
Continue development and application of WRF-ARW, CAM-scale, ensemble-based DA capabilities, focusing on radar, satellite, and other available high-resolution obs, transitioning to comparable FV3-based capabilities for testing in HWT SFE-2020											
Continue development of FV3-based ensemble data assimilation system at CAM scales, with hourly analysis updates and assimilation of radar reflectivity, cloud analyses, lightning observations and all observing systems including new satellite platforms (GOES-16/17, NOAA-20)								Transition CAM-scale DA capabilities to FV3 basis			
				Transition all CAM DA development efforts to FV3-, ensemble-based systems							
Include deterministic FV3-based CAM in operational multi-model HREF evaluate impacts, and establish baseline CAM-ensemble performance.											
Continue development and enhancement of HRRRE forecast system and evaluate performance in multiple testbeds, comparing performance to HREF baseline								HREF to RRFS ensemble forecast system development			
				Freeze HRRRE development and transition ensemble-based DA and forecast capabilities from ARW-based HRRRE and WoF to FV3-based systems with equivalent or better capabilities							
				Begin final testing and assessment of implementation viability for WoF-enabling RRFS CAM ensemble							



CAM WG



Team Coordination and Dependencies

SIP CAM annex changes for FY19-21

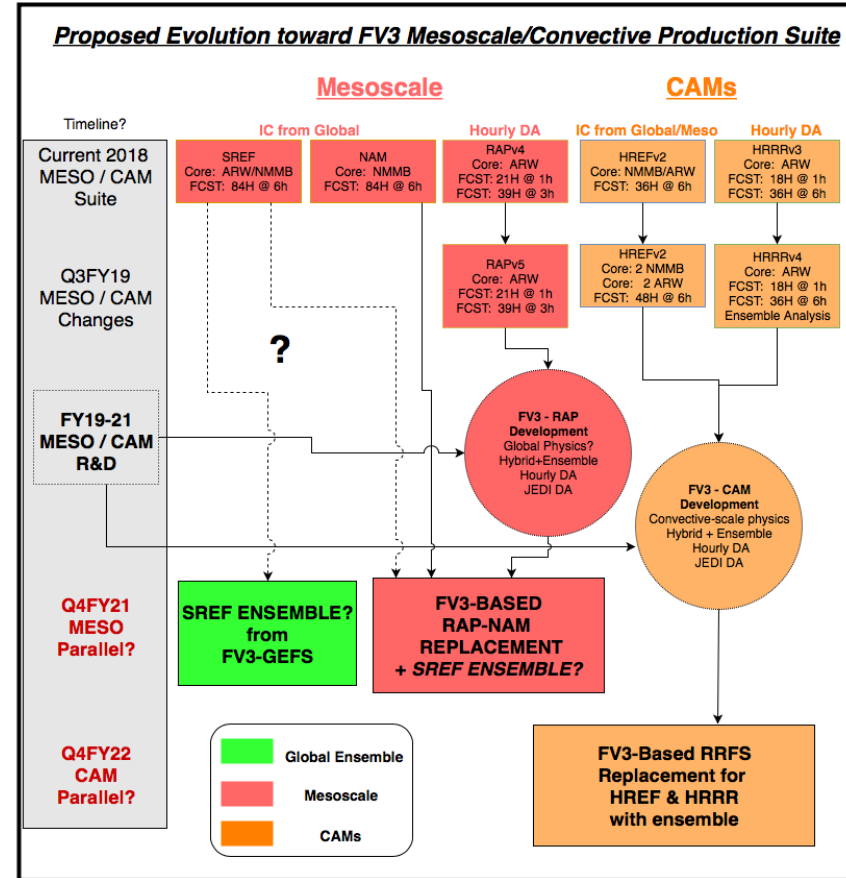
Building road map for regional/CAM component transition to FV3 and RRFS

Mesoscale deterministic and ensembles

- NAM/RAP consolidation
- SREF future with FV3-GEFS

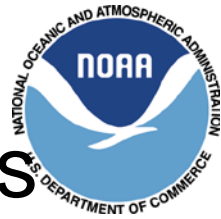
CAM scale deterministic and ensembles

- NAMnest/HRRR consolidation
- HREF future with RRFS





CAM WG



Team Coordination and Dependencies

SIP project issues:

- Level of granularity of vLab git branching between SAR FV3 developers (minor)
- Improving uniformity of grid size for SAR FV3 domains (minor)
- Assignment of MET post-processing to SAR FV3 workflows (minor)
- Documentation of SAR FV3 workflow (minor)

- Ramp-up DTC UFS CAM support (major but underway)

- Selection of operational baseline for RRFS implementation decisions (major)
 - o Multiple existing operational CAMs (NAMnest, HRRR, HiResWindows)
 - o Need more specificity and tighter scope in CAM test plan for implementation decision

- Future of NAM/RAP/SREF (major)
 - o When can we transition to GFS/GEFS for CAM-scale initializations and other mesoscale environmental applications (i.e. SPC...)?
 - o Need for global rapid-refresh capability (physics and DA) and implementation plan
 - o Dependency on global SIP WG that doesn't exist (data assimilation/physics/ensemble WG proxies?)